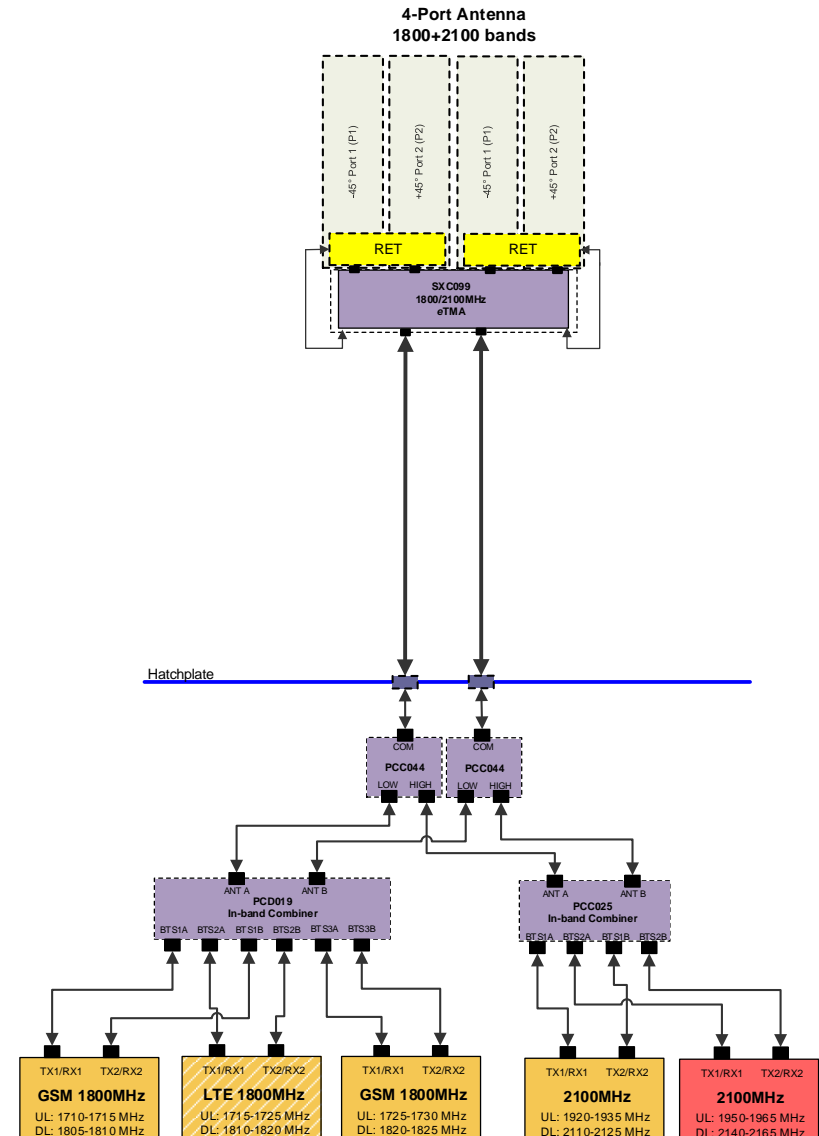


- SXC099-Dual Band 1800/2100MHz TMA
 - 12 dB gain
 - 4 Antenna Ports With
 - Direct Connect to Antenna
 - AISG RET Port for Each Frequency Band
- PCC044-1800+2100 Cross-band Combiner
 - Low Channel 1710-1880MHz
 - High Channel 1920-2200MHz
 - Low loss (< 0.4 dB) and high isolation (> 40 dB)
- PCD019-1800MHz In-Band Combiner
 - Inserting a 10MHz LTE Career Between Two Adjacent GSM Blocks
 - 1 MHz Guard Band
 - Low Loss Filter Combiners at Both RX and TX Sides
- PCC025-2100MHz In-Band Combiner
 - 1- 5-15MHz Block Within 2100MHz Band
 - 2- Any Other Size Block Within 2100MHz Band
 - 15MHz Guard Band
- Used with 1800/2100MHz Capable Antenna



For further information about possible frequency allocations, please contact: Technical@filtronic.com