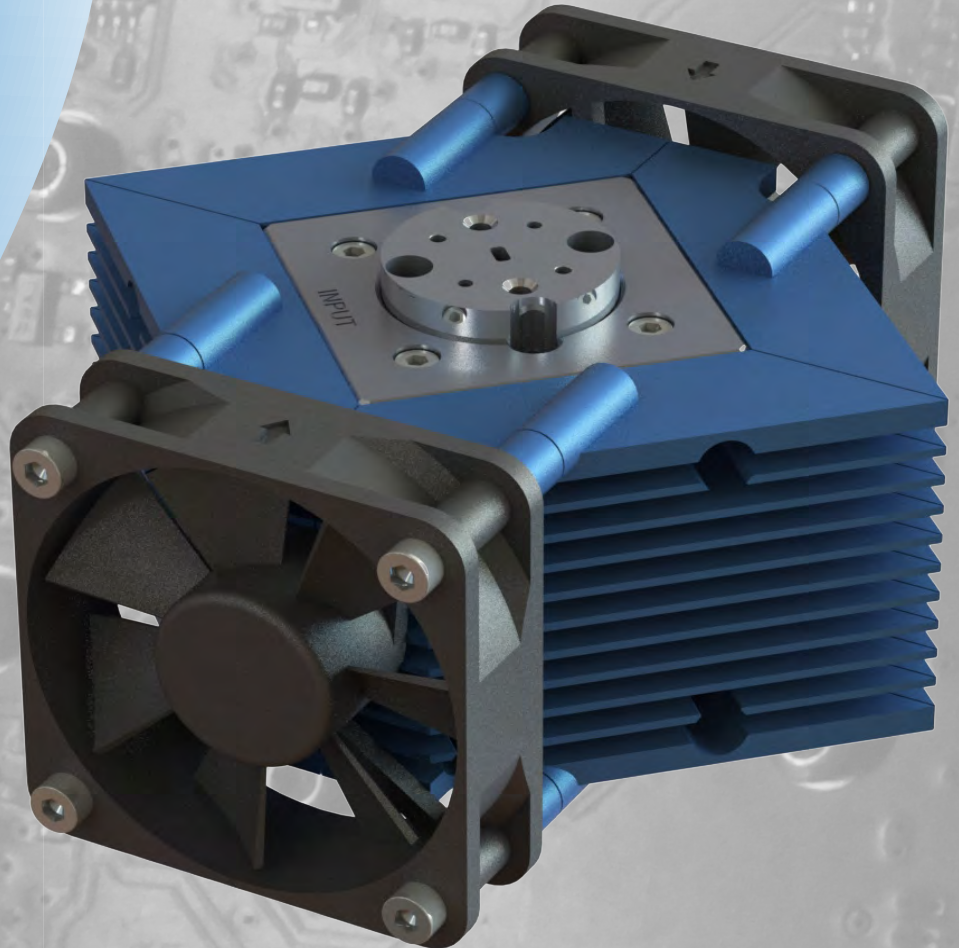




Filtronic



Cerus

E-band Power Amplifier

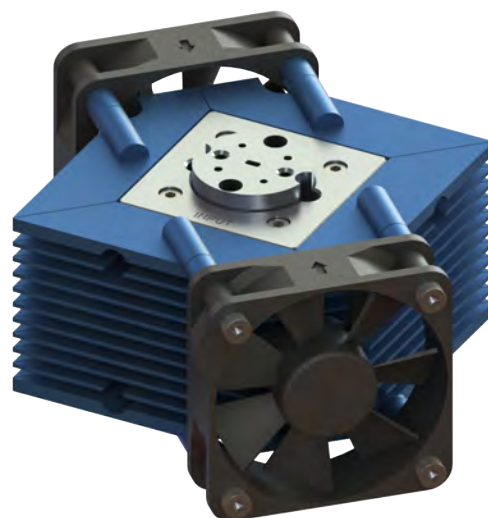
Market Leading Transmit Power

www.filtronic.com

Cerus, the 71-76GHz and 81-86GHz boost power amplifiers from Filtronic, deliver market-leading transmit power, enabling extended link distances for high capacity E-band point-to-point, HAPS and Satellite applications.

Compact light weight design can be easily integrated with Filtronic transmitter modules.

- Supports high order modulation schemes including 256QAM.
- Demonstrated operation at +33dBm QPSK.



Note: Fans and heatsink are not required for operation.

Cerus Version Specifications & Electrical			
Cerus 4	Frequency Range [GHz]	71 - 76	81 - 86
	PSAT [dBm]	+33 (2W)	+32 (1.6W)
	OIP3 [dBm]	39	38
	Small Signal Gain [dB]	24	22
	Gain Control Dynamic Range [dB]	>10	
	Supply Voltage [V]	+5, -5 & 0 to 2.5 CTRL	
	Supply Current [A]	5.5	
Cerus 8	Frequency Range [GHz]	71 - 76	81 - 86
	PSAT [dBm]	+36 (4W)	+35 (3.6W)
	OIP3 [dBm]	42	41
	Small Signal Gain [dB]	24	22
	Gain Control Dynamic Range [dB]	>10	
	Supply Voltage [V]	+5, -5 & 0 to 2.5 CTRL	
	Supply Current [A]	11.0	
Common	Integrated Temperature Sensor	Yes	
	Waveguide Interface	WR12	
	Temperature Range [°C]	-40 to +70	
	Dimensions [mm]	40 x 40 x 47	
	Weight [g]	150	

up to
+36dBm

**+33dBm
QPSK**

256QAM

Contact Us

NETPark Plexus | Thomas Wright Way | Sedgfield | County Durham | TS21 3FD | UK
 +44 (0) 1740 625 163
sales@filtronic.com



Rev 3.0